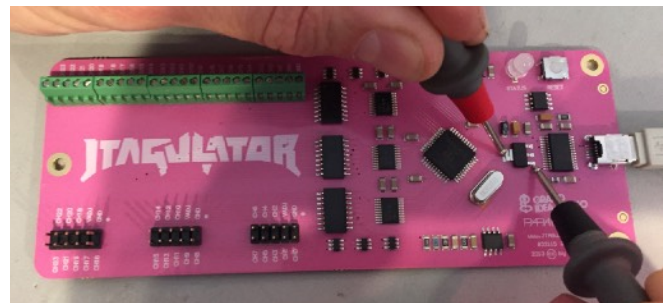
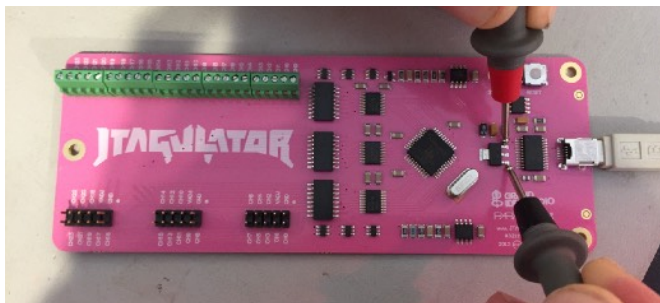
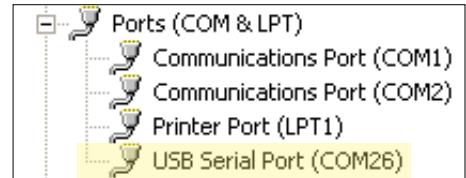


Refer to video demonstration at <https://youtu.be/rFy3ZFVTLcQ>

Document version 2.1, February 26, 2021

Setup:

1. Attach USB cable between host computer and JTAGulator
 - a. Host computer should recognize USB device (FT232R USB UART or USB Serial Port)
 - b. Error or no detection indicates failure at P1, U1, U3, or associated components
2. U6 pin 3 = 5.0V +/- 5% = 4.75V to 5.25V
3. U6 pin 2 or 4 (tab) = 3.3V +/- 1% = 3.26V to 3.34V



Programming:

4. Load Parallax Propeller Tool on host computer and select Run | Identify Hardware... or press F7
 - a. Error or no detection indicates failure at U2, Q1, or associated components
5. Program EEPROM w/ JTAGulator code (via pre-compiled .eprom file or built from source)
 - a. Refer to video demonstration at <https://youtu.be/xlXwy-weG1M>
 - b. Error or no detection indicates failure at U4, U2, or associated components
6. LED = ORANGE
 - a. No LED indicates failure at D1, U2, or associated components

